



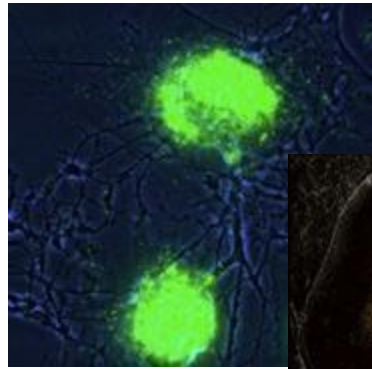
INSTRUCT integrating biology

**Providing access to state of the art structural biology
infrastructure for researchers**

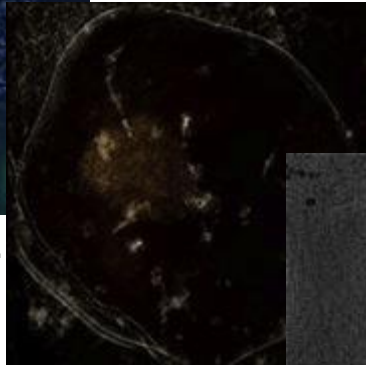
March 2016

Increasing biological complexity and integrity

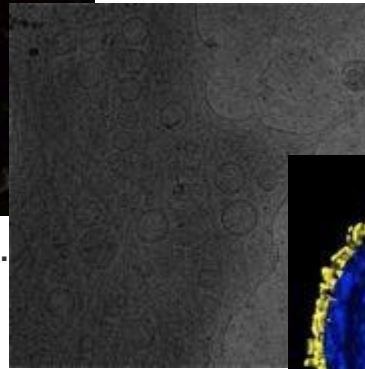
- Real challenges for managing data to integrate outputs



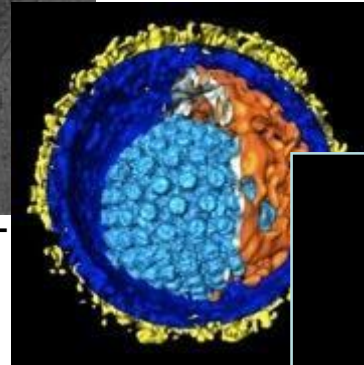
Fluor. microsc.



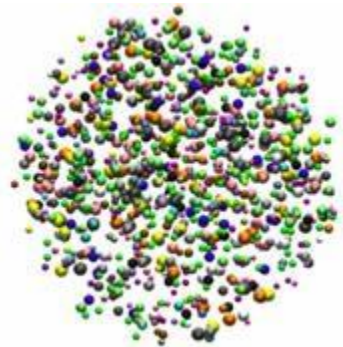
X-ray microsc.



Cellular cryoET



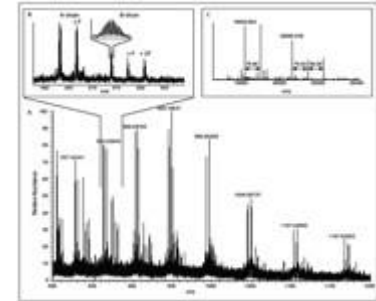
CryoET



Spatio-temporal

NMR

**small-angle
scattering**



Proteomics



Single particle



Crystallography

Increasing resolution

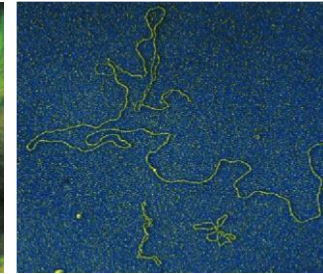
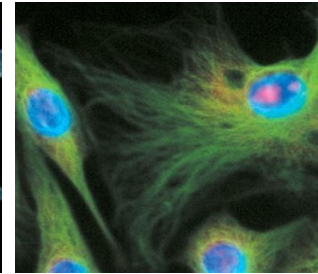
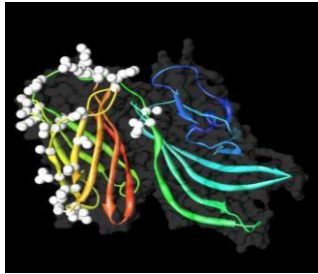
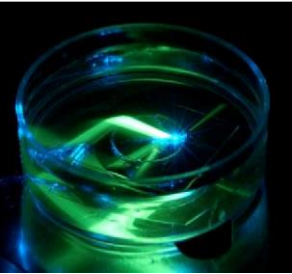


μm

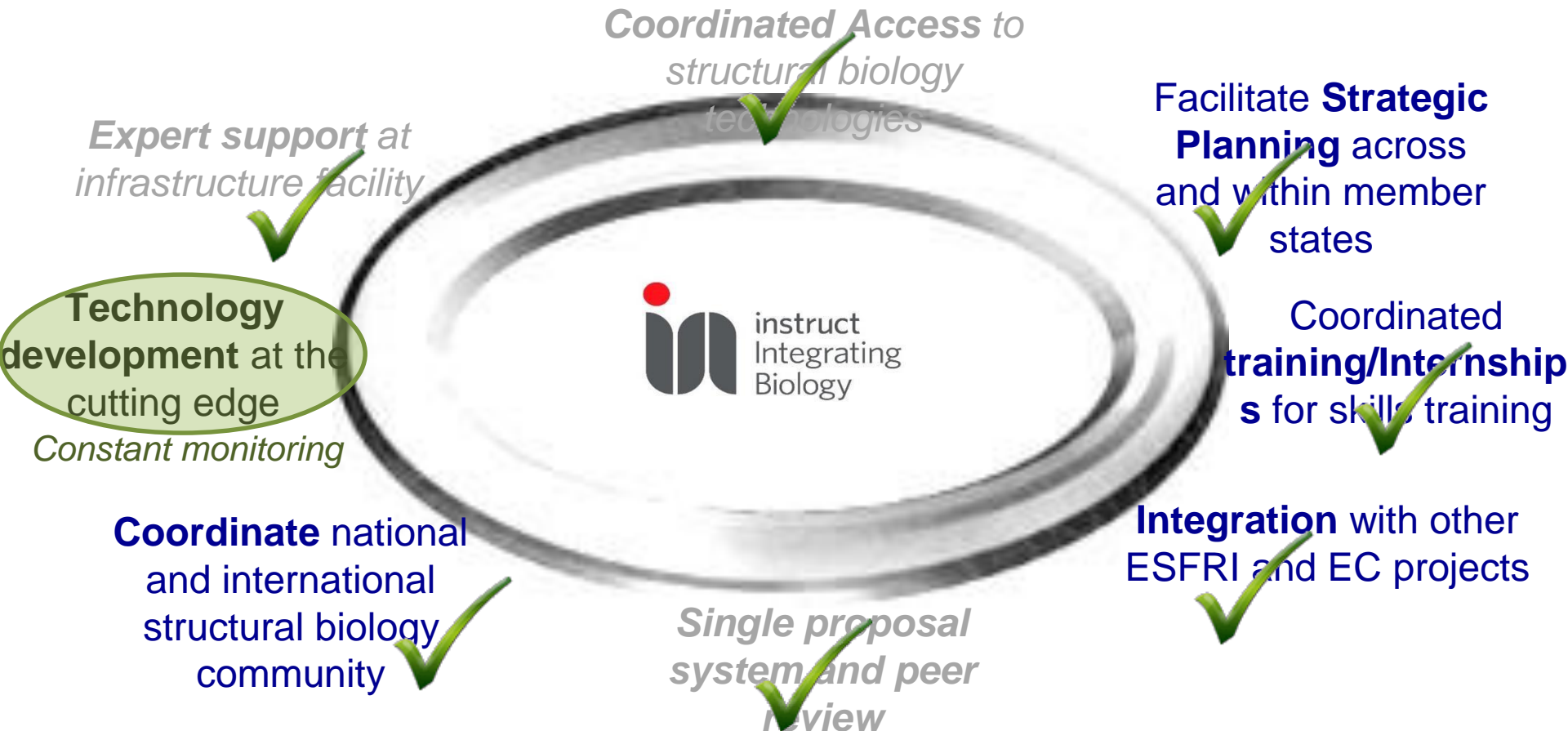
nm

\AA

Instruct: coordinates more than just access



Access



Instruct

- *Instruct enables European users to **access cutting edge technologies** with excellent scientific and technical guidance*

The **national funders** provide for Instruct:

- *the key infrastructure at Instruct Centres*
- *the costs of using their best equipment for access as part of the Instruct infrastructure.*
- *Nominated consumable costs for standard access units*
- *Key support staff to ensure the best outcome*

Instruct provides:

- *The access process – proposal submission, review, scheduling, reports*
 - *Funds to support users to visit Instruct Centres for access (travel and accommodation; some consumable costs) up to a maximum of €1500 per access unit (exceptionally can be increased to €3000)*
- Access is internationally open **to all researchers from Instruct member countries** and awarded on the basis of scientific peer review.*

